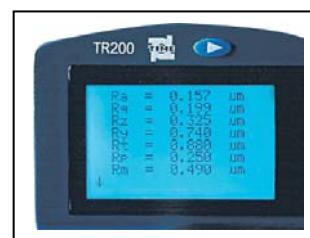
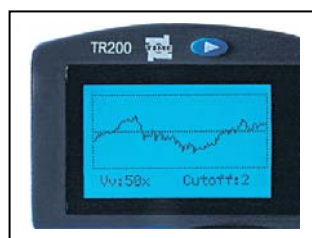


# Surface Roughness Tester TR200



- Easy to operate menu software
- Graphical display on large LCD
- 13 different roughness parameters
- Optional pickup for grooves/bores and holes.
- English, German, French, Italian, Spanish and Dutch language
- Data output RS232 to printer TA220S or PC
- Li-ion rechargeable Battery
- Standard conform ISO/DIN/JIS/ANSI (Menu selectable)



## Technical specifications

Roughness parameters	Ra, Rz, Ry, Rq, Rt, Rp, Rmax, Rv, R3z, RS, RSm, RSk, Rmr, Primary profile (P)
Assessed profiles	Roughness profile (R) Rmr curve (material ratio Mr)
Profile recording magnification	Vv: 200x - 20000x Vh: 20x , 50x , 200x
Measuring system	Metric, imperial
Display resolution	0.001 µ m / 0.04 µ inch
Display	LCD 128 x 64 dot-matrix, with backlight
Dimensions of LCD	50 x 30mm screen Pickup stylus position indicator Battery level indicator
Display features	Direct display of parameters and profiles Direct printing LCD brightness adjustment Auto-off after 5 minutes with auto-store Calibration through software
Data output	RS232; direct to printer TA220S or PC
Display Range	Ra, Rq: 0.005~16µ m Rz,Ry,Rp,Rt,R3z: 0.02-160µm RSm, RS: 2-4000µm Rmr: 1-100%
Cutoff length	0.25mm / 0.8mm / 2.5mm
Evaluation length	1~5 cut-off (selectable)
Tracing length	( 1~5 cut-off ) + 2 cut-off
Digital filter	RC, PC-RC, Gauss, D-P
Pick-up	Standard model TS100, inductive, Diamond tip radius 5µ
Bores from diameter	6.0mm, depth 15mm (TS100 )
Power	Li-ion battery rechargeable
Charger	220V / 110V, 50Hz, 2.5 hours (charging time)
Working temperature	0-40°C
Relative humidity	<80%
Storing temperature	-25 °C -60 °C
Ventilation	Grade 3
Dimensions	141mm×56mm ×48mm
Weight	480g

### Standard delivery

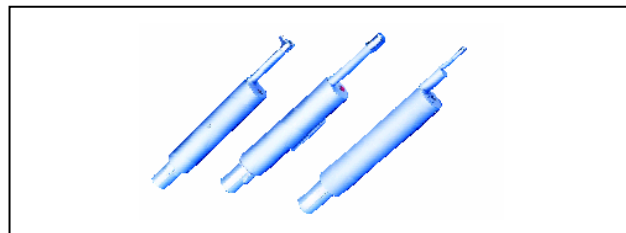
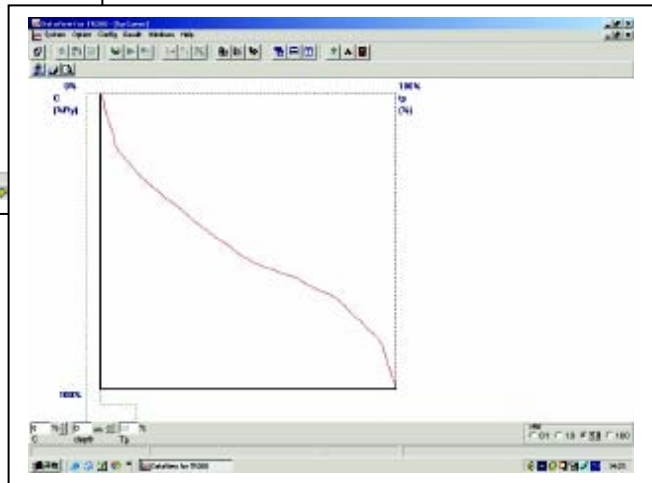
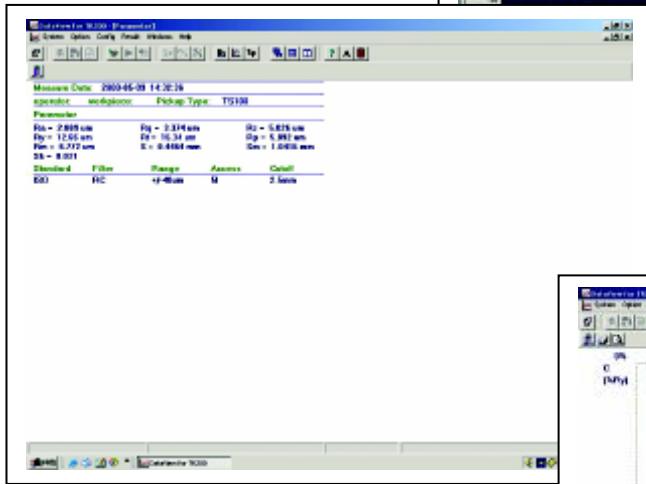
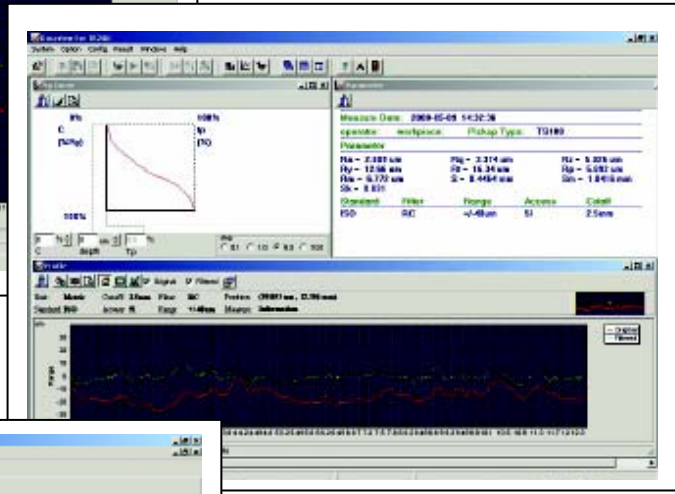
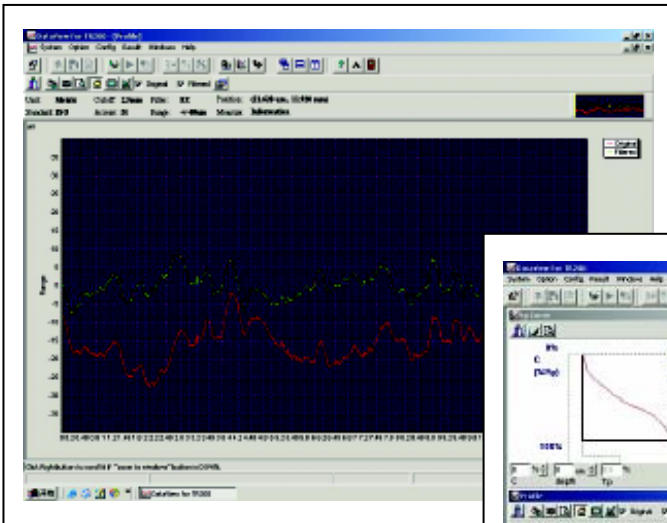
- Main unit TR200 1
- Pickup TS100 1
- Specimen Ra 1
- Protection nose 1
- Steel support 1
- Charger 1
- Screwdriver 1
- Instruction manual 1
- TIME certificate 1
- Warranty card 1
- Carrying case 1

### Optional accessories

- Special Pickup TS110, TS120, TS130 and TS131
- Test platform TA610 / TA620 / TA630 / TA631
- Printer TA220S
- Steel adapter (φ8mm) for universal stand
- Steel adapter for connection to platform TA610 / TA620 / TA630 / TA631
- Extension rod
- Dataview software
- Interface cable

# Surface Roughness Tester TR200

Dataview for TR200



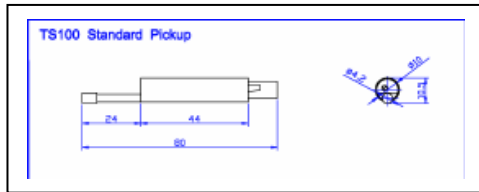
Pickup for TR200



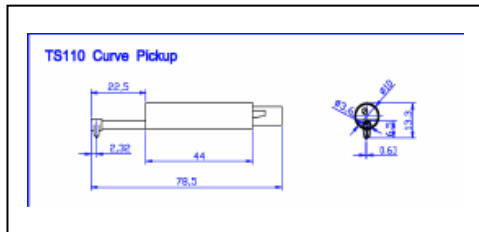
1808001

**Pickup**

# Optional Accessories for TR200/210/220

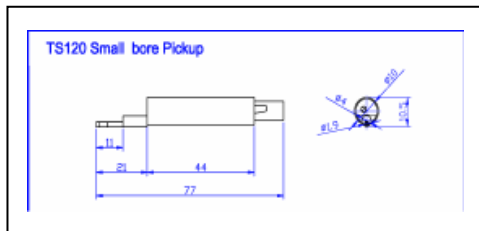
**TS100****Standard pickup**

With skid for roughness tests on plane surface, shafts and in bores from 5mm diameter. Maximum bore depth 22mm.

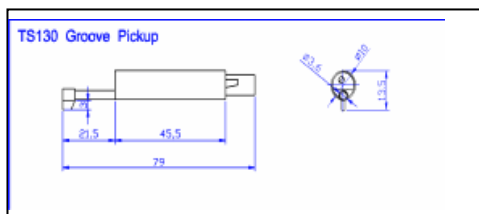
**TS110**

Pickup with side skid for roughness tests on convex and concave surfaces. Minimum bore diameter 8mm, maximum bore depth 20mm.

To be used with TA610 / TA620

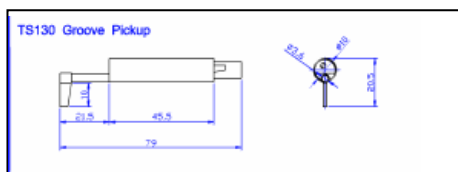
**TS120**

Pickup with mini-skid for roughness tests for in bores from 2mm. Maximum bore depth 9mm.

**TS130**

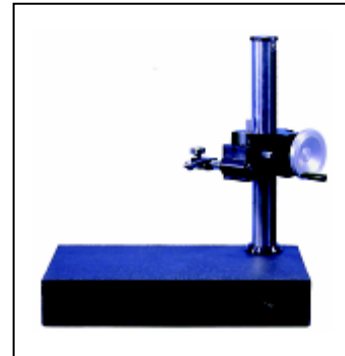
Measure surface roughness of deep groove or step below 3mm, other function is the same to TS100

To be used with TA610 / TA620

**TS131**

Measure surface roughness of deep groove or step below 10mm, other function is the same to TS100

To be used with TA610 / TA620

**Platform****TA610 Measuring Platform****Specifications:**

Surface Dimension: 400 x 250 mm

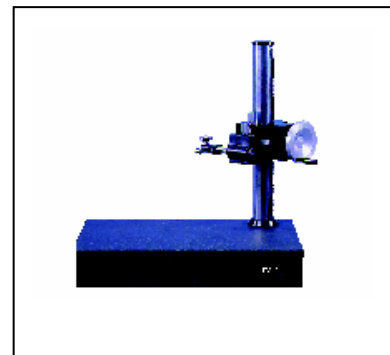
X-axial range: 28 mm

Y-axial range: 270 mm

Z-axial range: 40 mm

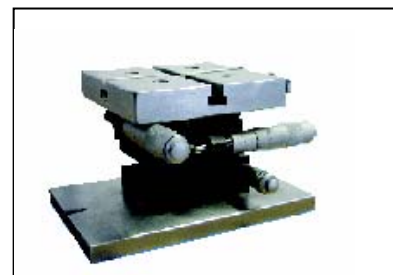
Vertical rotate range:  $\leq \pm 90^\circ$

Level rotate range:  $\leq \pm 25^\circ$

**TA620 Measuring Platform****Specifications:**

Surface Dimension: 400 x 250 mm

Y-axial range: 300 mm

**TA630 / TA631 Micro Measuring Support****Specifications:**

X-axial range: 12.5mm

Y-axial range: 12.5mm

Z-axial range: 40mm

Level rotate range:  $360^\circ$

Level:  $0 \sim 5^\circ$  (only for TA631)